



THE CURE

SENA KANTEK GRADUATION PROJECT

SPRING 2022

CONTENTS



CONTEXT

CASE STUDIES

THE DESIGN



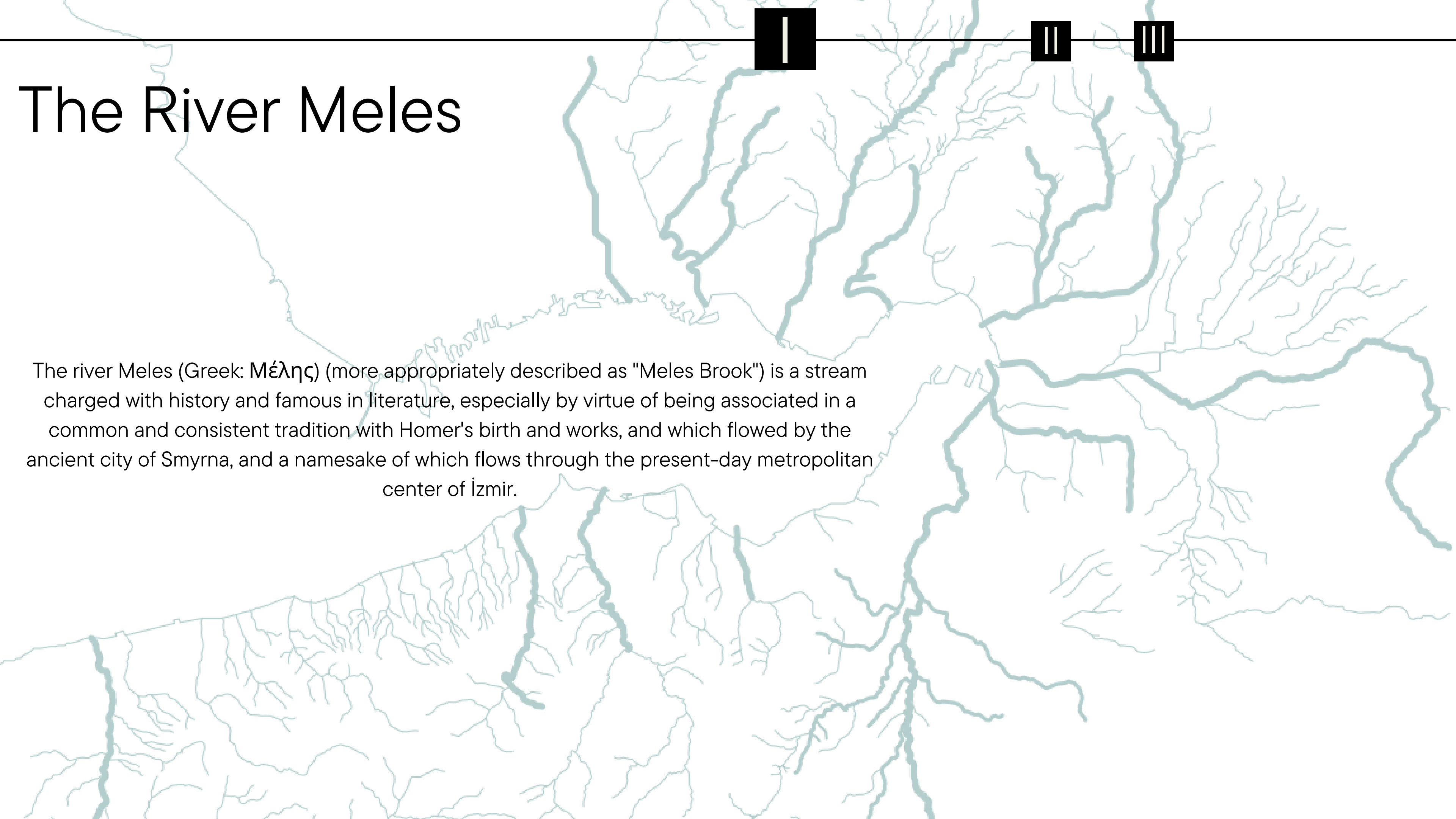


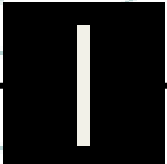
CONTEXT



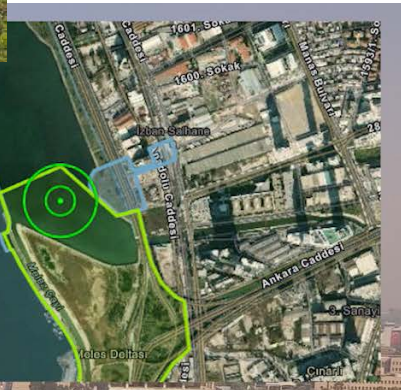
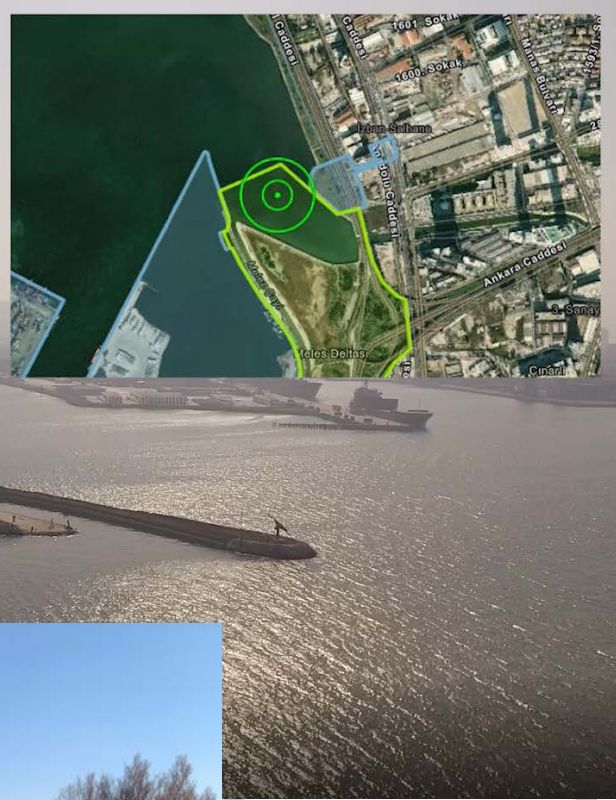
The River Meles

The river Meles (Greek: Μέλις) (more appropriately described as "Meles Brook") is a stream charged with history and famous in literature, especially by virtue of being associated in a common and consistent tradition with Homer's birth and works, and which flowed by the ancient city of Smyrna, and a namesake of which flows through the present-day metropolitan center of İzmir.



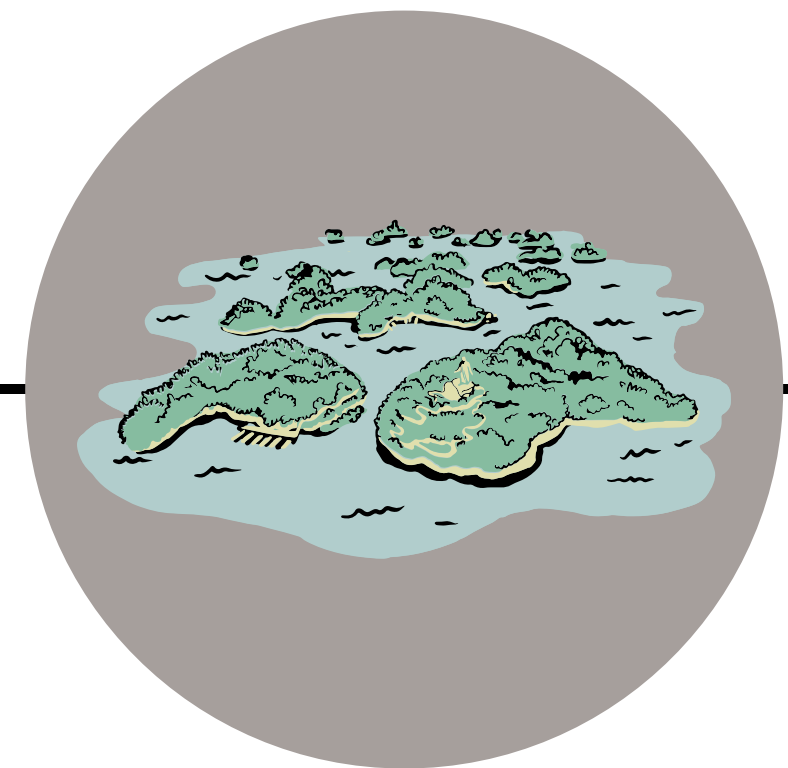
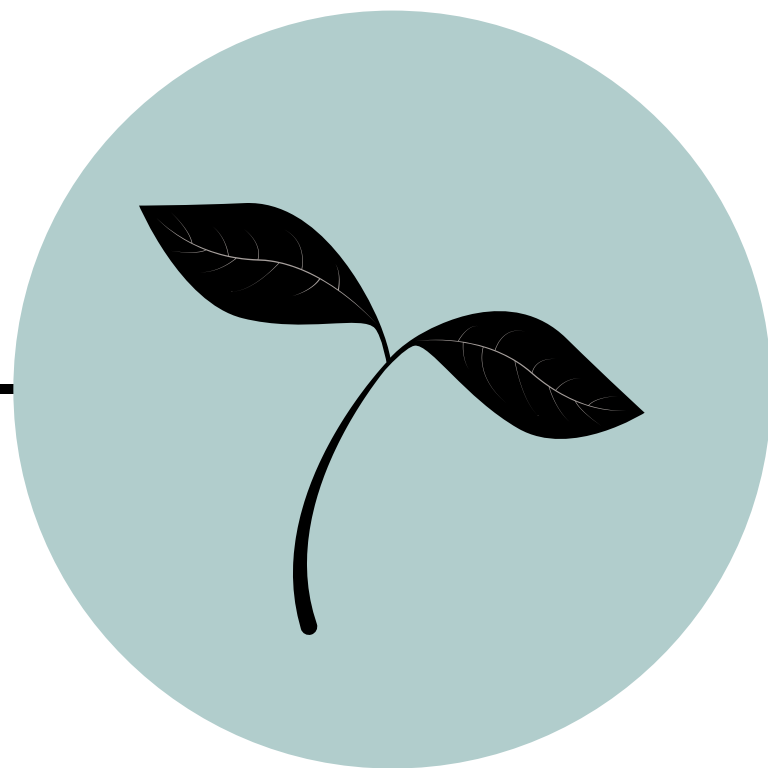


Odak Alan 8
Meles Deltası



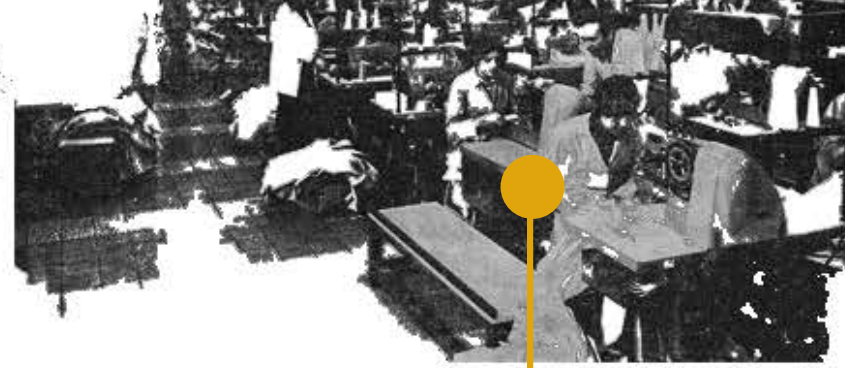


Meles Stream stands out as one of the most important backbones of İzmir, which carries the 'Culture of İzmir' from history to the present day, brings many historical, ecological and socio-cultural values it contains, and connects urban and rural life. This relationship of Meles Stream with urban and rural areas has weakened today, and this living spine has become uninhabitable due to the rapidly developing urbanization process.



Meles Living Corridor aims not only to revitalize a life along the spine, but also to provide a regional development by blending all the values that keep the culture of İzmir alive.

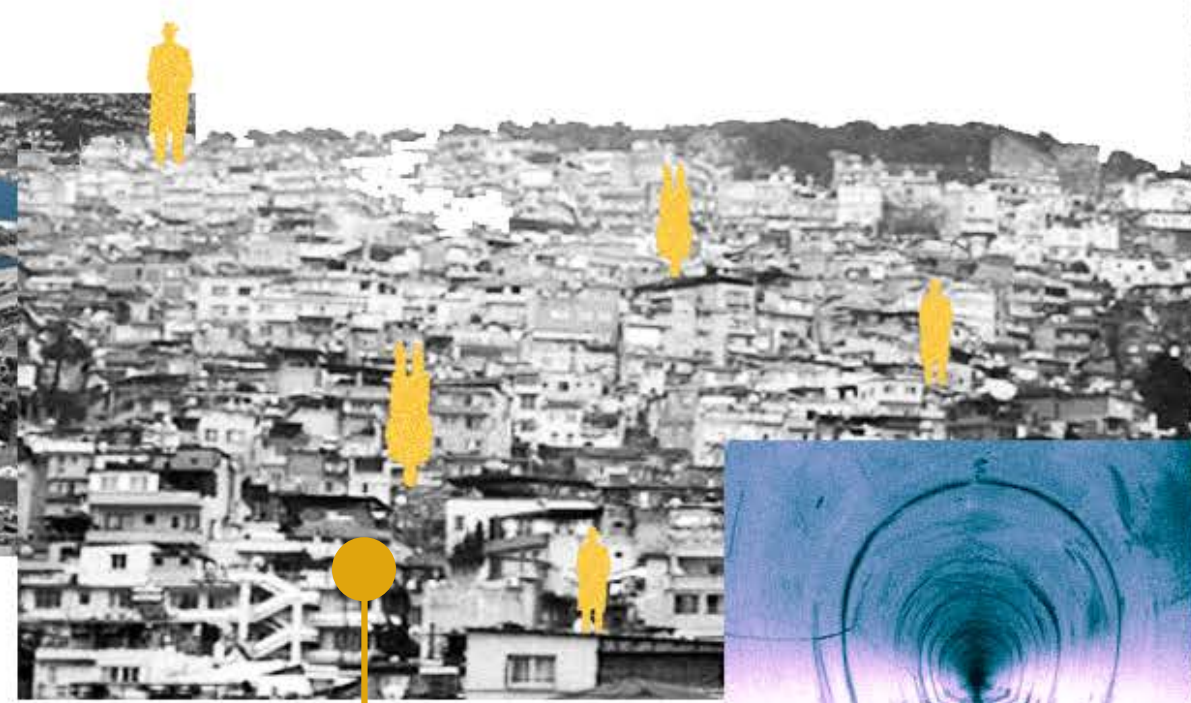
TIMELINE OF THE POLLUTION



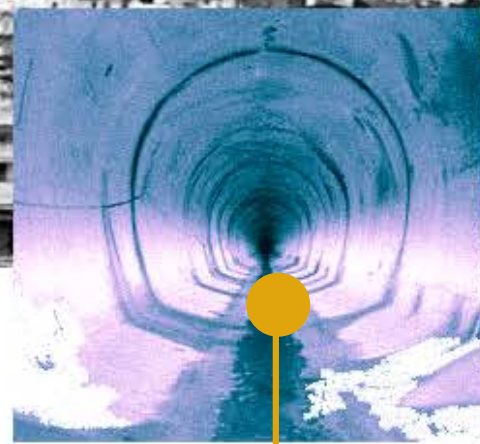
Industrial actions



Izmir Port, in 1959 is put into service. Izmir Port is the main reason of the pollution and loss of habitats.

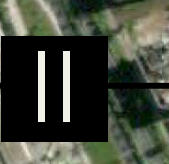


Meles stream valley south in Ballıkuyu, Gürçeşme, First Kadriye, Second Kadriye, in Kadifekale neighborhoods squatting movement



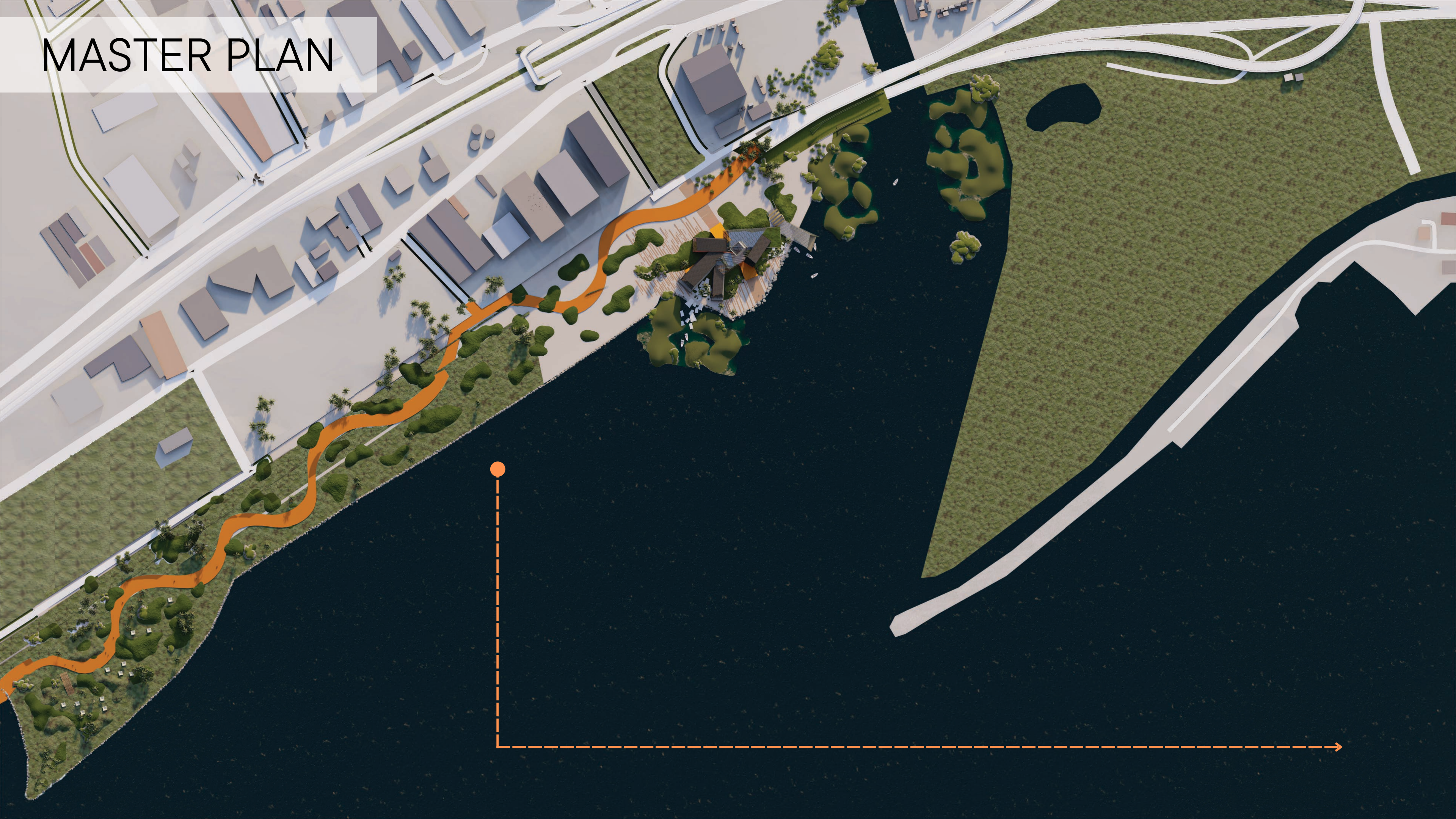
Izmir Grand Canal Project foundations are laid.

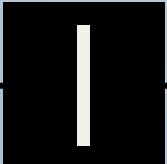




○ FOCUS AREA
 ━ URBAN DEVELOPMENT

MASTER PLAN





An architectural rendering of a modern building complex. The main building features a prominent, angular, dark-colored facade with large glass panels. In the foreground, there is a courtyard with several large, light-colored concrete blocks arranged in a stepped pattern. Palm trees and other tropical plants are scattered throughout the scene. The sun is visible in the sky, creating a warm, golden light. A few small figures of people are placed throughout the scene to provide a sense of scale.

CASE STUDIES



- Princess of Whales Conservatory
- Media Complex by CAAT Studio
- Cooled Conservatories at Gardens by the Bay

PRINCESS OF WHALES CONSERVATORY

With ten computer-controlled climate zones, the Princess of Wales Conservatory is a glassy labyrinth leading you through a series of fascinating ecosystems.

The glasshouse is enormous. It spans 4,500 square metres. 10 computer-controlled climatic zones adjust the heat, ventilation and humidity. We scientifically recreate cool deserts, tropical rainforests and a few other environments here and study them carefully. Some aquatic species can also be spotted in the tanks and pond. The oldest species we have here is a redtail catfish. The piranha though usually attracts a lot of attention. In 1985, Sir David Attenborough buried a time capsule in the foundation of the building. It contains seeds of important food crops and several endangered species. We plan to open it in 2085, when many of the plants it contains may be rare or extinct.

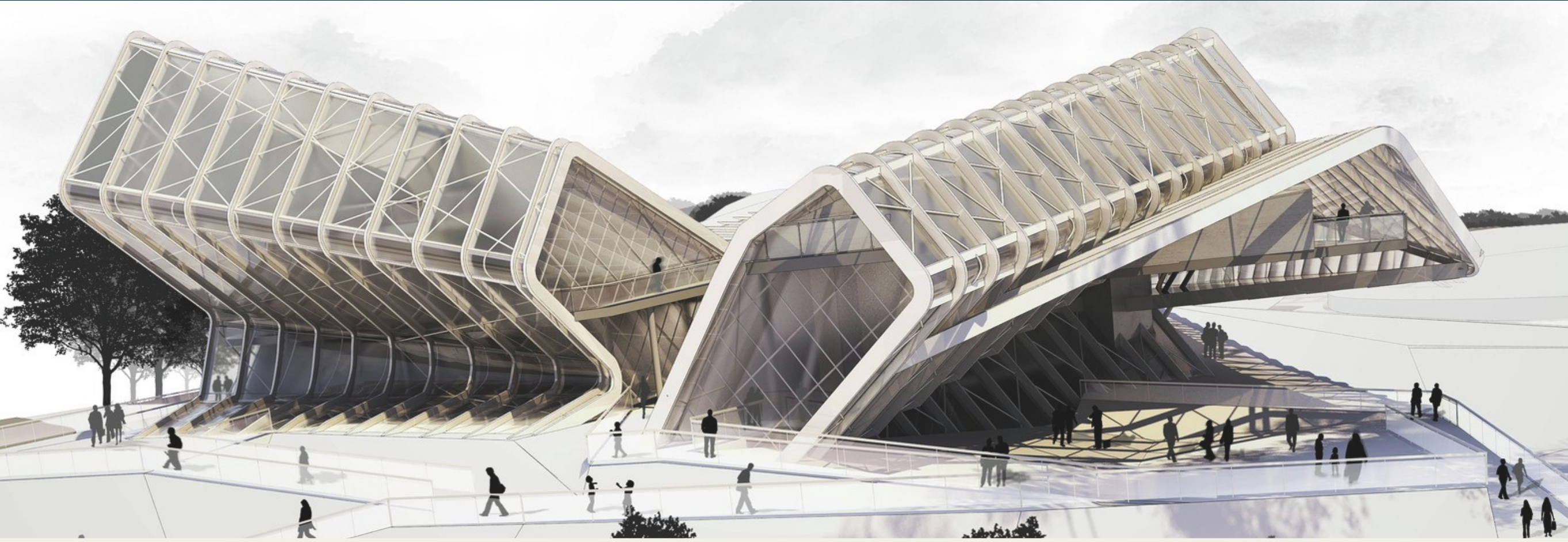
ARCHITECT: Gordon Wilson

LOCATION: London, England

TYPE: Botanical Garden



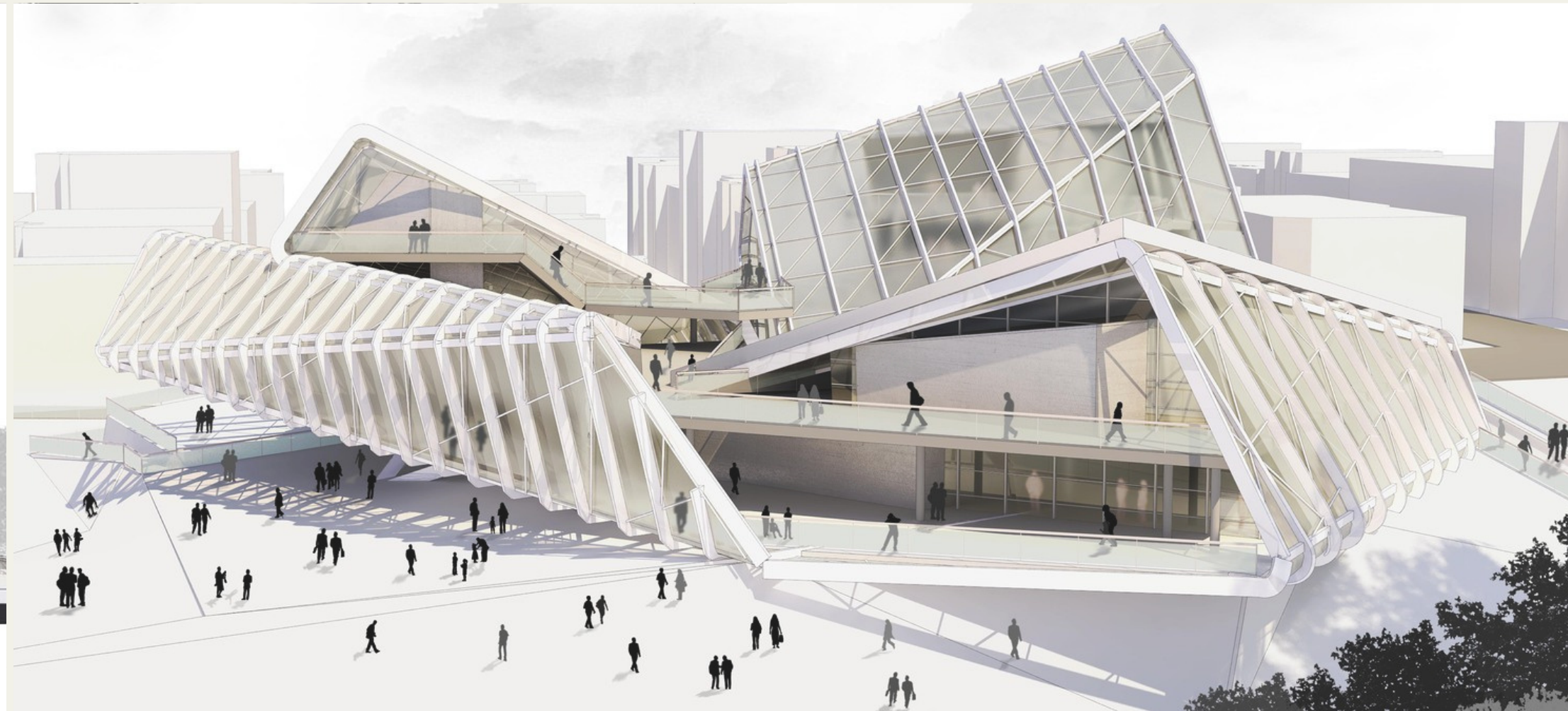
MEDIA COMPLEX



ARCHITECT: CAAT STUDIO

LOCATION: Tehran, Iran

TYPE: Cultural, Educational



COOLED CONSERVATORIES AT GARDENS BY THE BAY

Two of the largest climate-controlled conservatories in the world have been constructed as the architectural centrepiece of Singapore's new 54-hectare Bay South Garden, the first completed part of the spectacular Gardens by the Bay project.

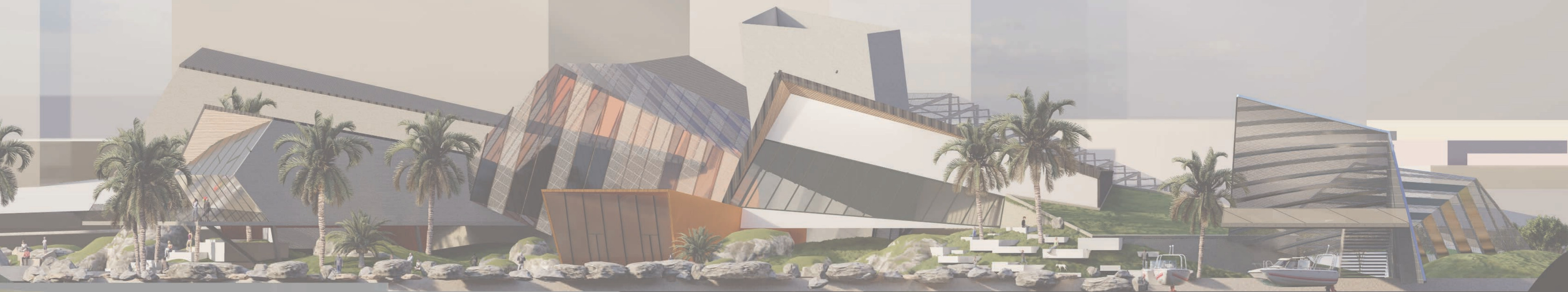
ARCHITECT: Wilkinson Eyre
Architects

LOCATION: Singapore

TYPE: Park



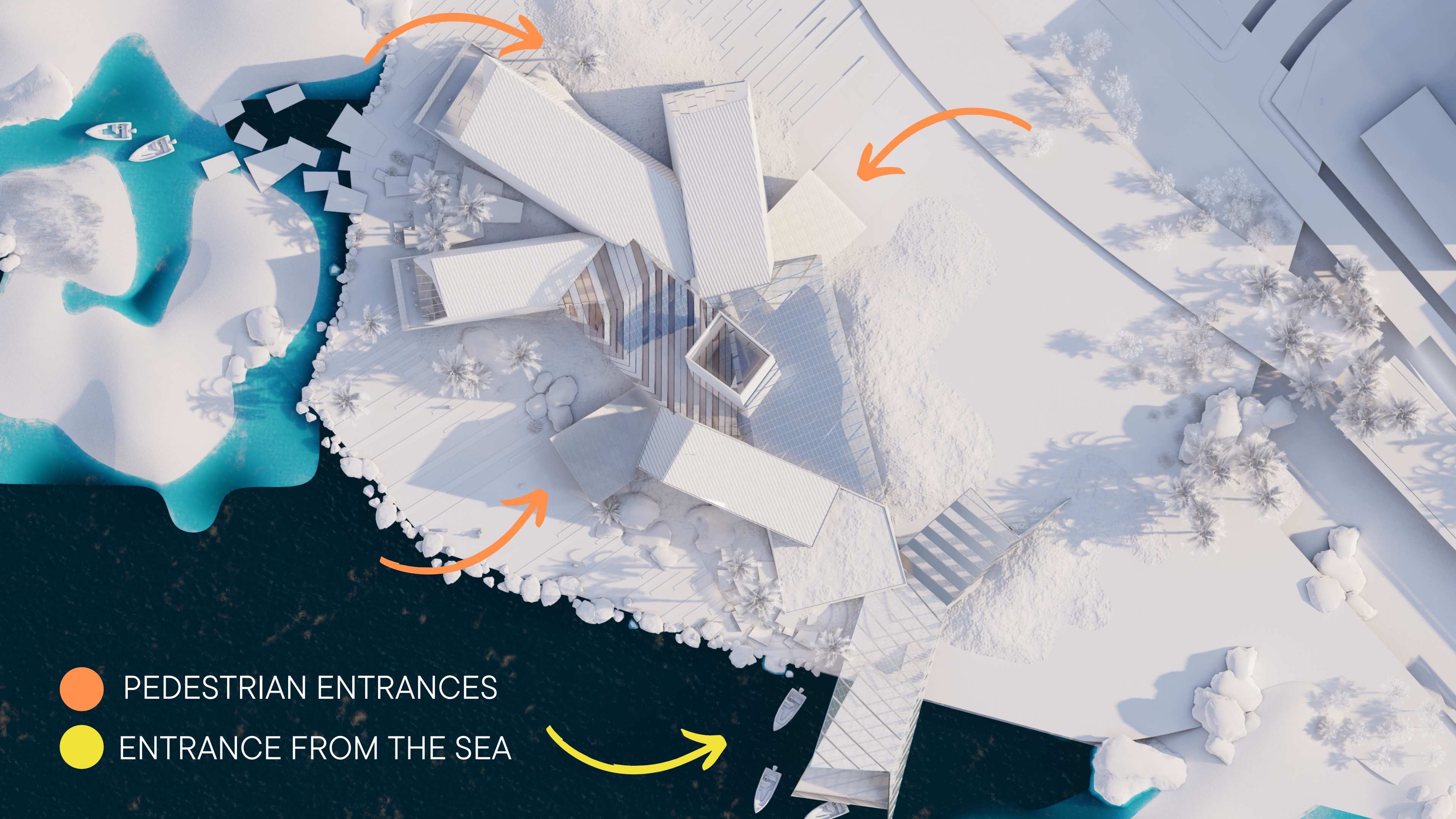
THE DESIGN







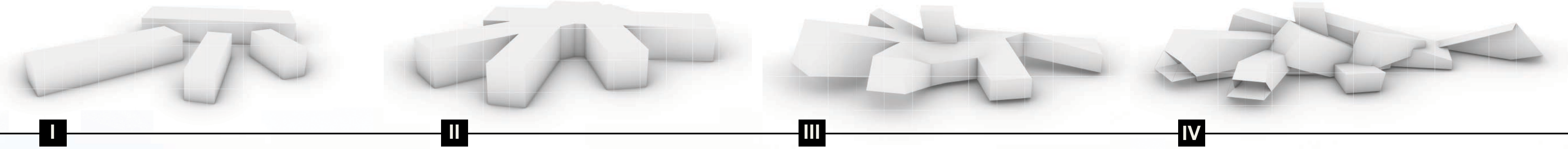
SITE PLAN

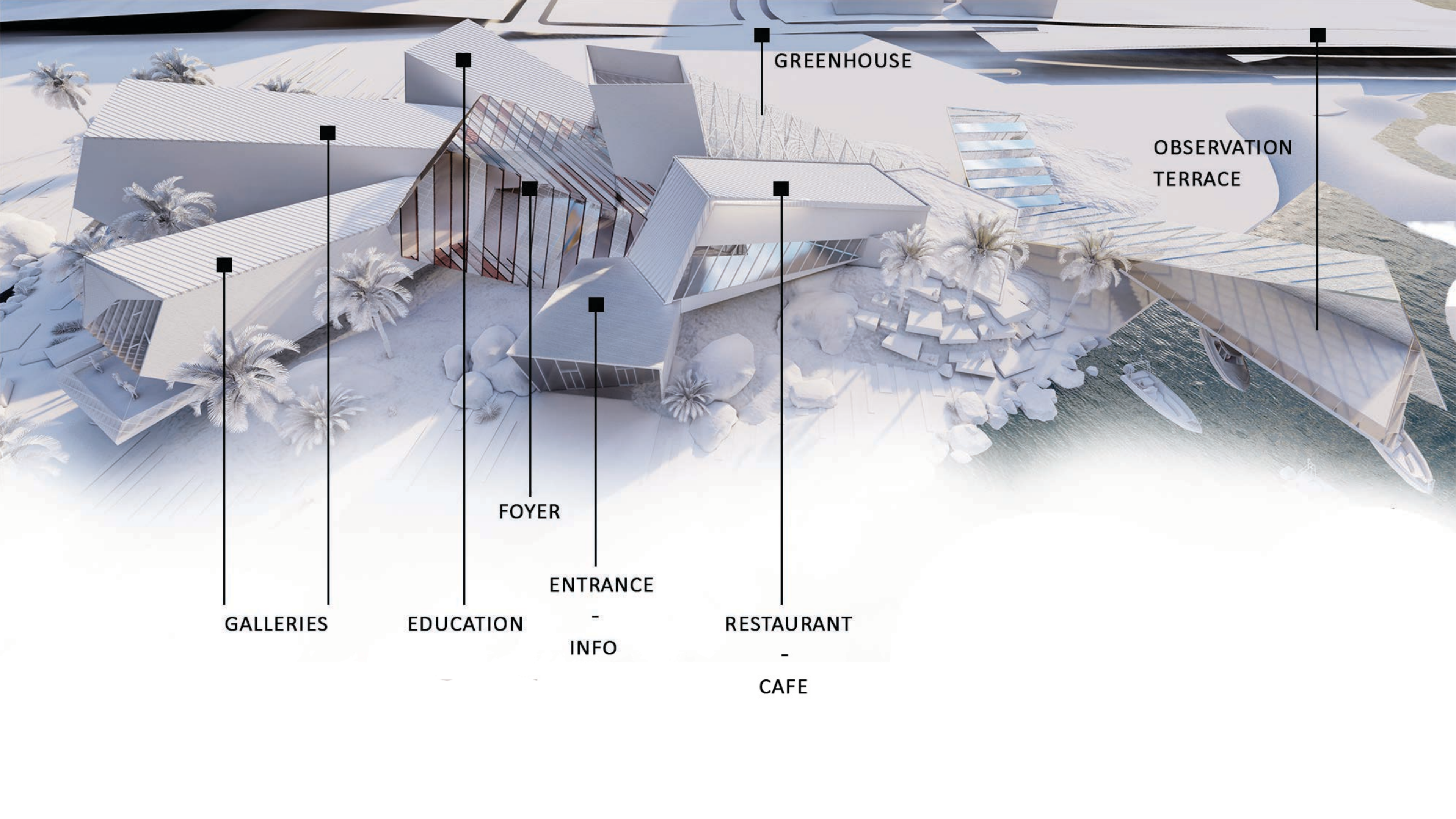


● PEDESTRIAN ENTRANCES

● ENTRANCE FROM THE SEA

DESIGN DIAGRAM





GREENHOUSE

OBSERVATION
TERRACE

FOYER

ENTRANCE

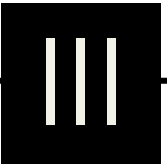
RESTAURANT

CAFE

GALLERIES

EDUCATION

INFO



Observation
deck

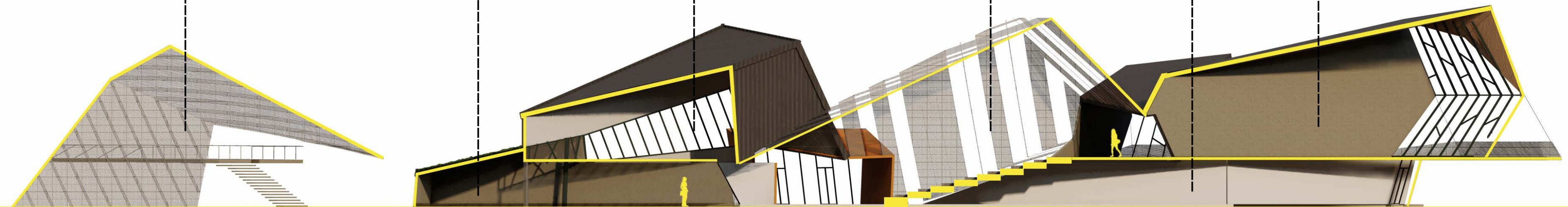
Lounge

Restaurant

Foyer

Laboratories

Gallery



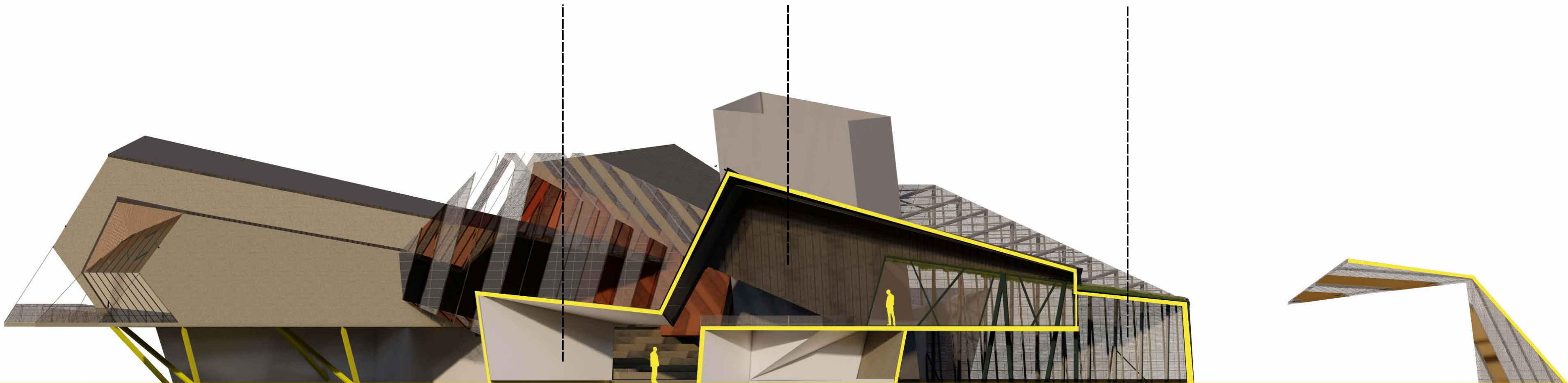
SECTION AA'



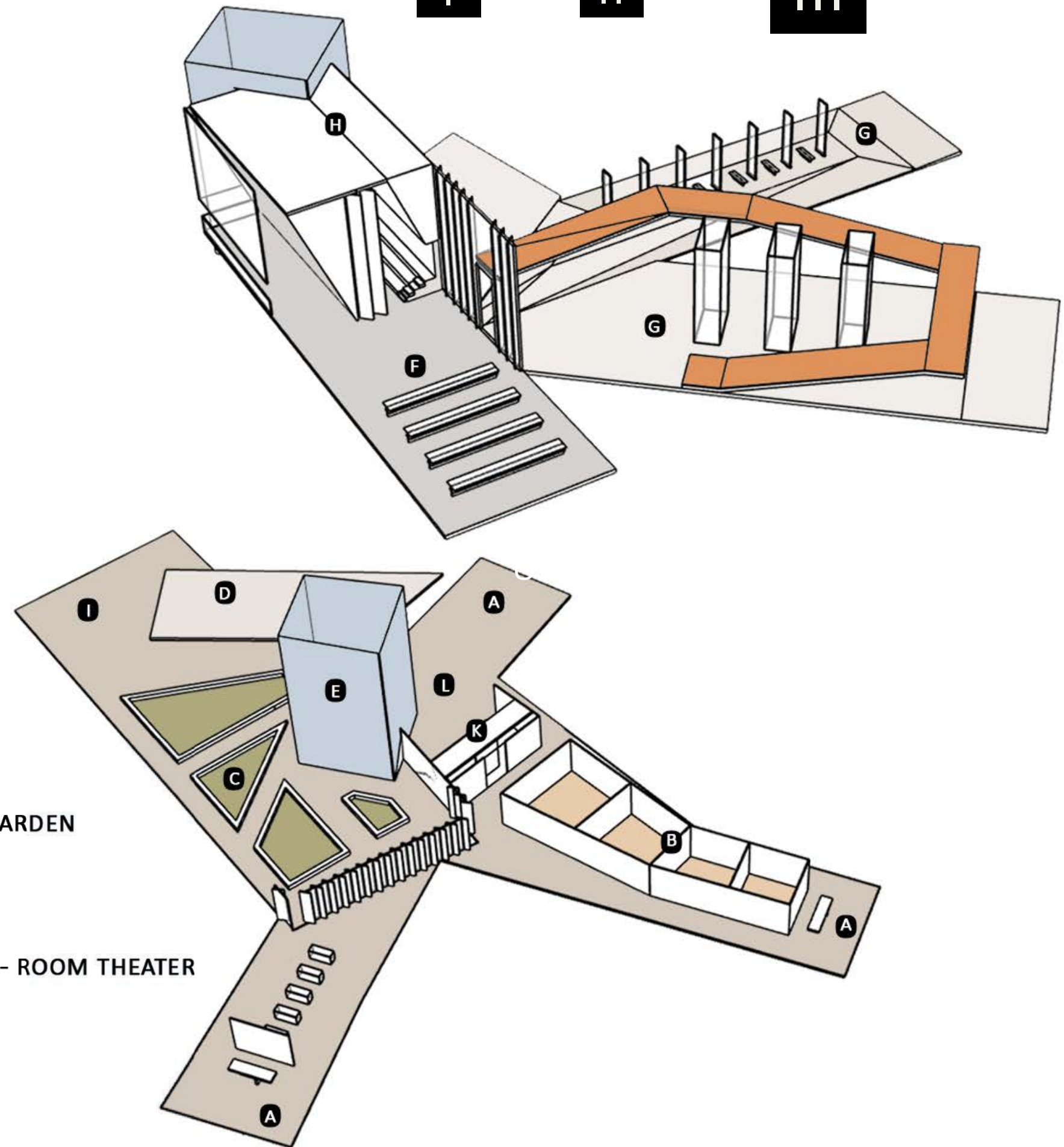
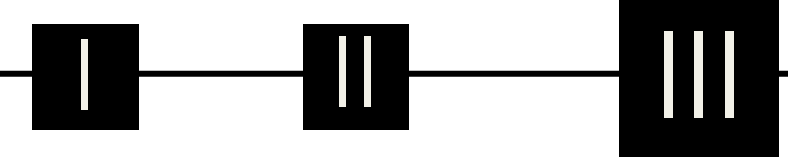
Entrance

Restaurant

Greenhouse



SECTION BB'



- A- ENTRANCE / INFO
- B- BOTANIC LABORATORIES
- C- GREENHOUSE- INNER GARDEN
- D- RESTAURANT / CAFE
- E- CIRCULATION / CORE
- F- WORKSHOP AREA
- H- MULTI PURPOSE AMPHI- ROOM THEATER
- G- GALLERIES
- I- LOUNGE
- K- AMPHI
- L- FOYER

